

Wi-Fi RTU user's manual

Version	Updated Content	Updated by	Approved By	Date	Note
1.0	The first version released	Kevin Yuan	Mencius	2016-12-3	

1 Product structure diagram



Product specification

Category	Entries	Parameters
General	Size(Length/Width/Height)	90*66*26mm
	Weight	187g
Parameter s	Protection class	IP21
	Rated voltage	DC5V~28V
	Maximum current	200mA(5V)

The user manual

	Operating temperature	-30°C ~ +85°C
	Storage temperature	-40°C ~ +90°C
External Interface	Serial port	RS485 or RS232 , used for communication
	Wi-Fi	1pcs , 2.4GHz, 802.11 b/g/n , AP+STA
	Antenna interface	Wi-Fi Onboard(External antenna can be selected)
Hardware part	Data input	RS485 /RS232
	Data output	Wi-Fi
	Serial port Baud rate	9600bps
	Delay time	1.5s
	Software watchdog	Available
Wi-Fi part	Wireless standard	802.11 b/g/n
	Frequency range	2.4GHz
	Antenna gain	>2.5 dBi
	Data rate	11Mbps@11b, 54Mbps@11g, 72Mbps@11n
	Hardware encryption	WEP , WPA/WPA2
	Communication distance	100M(Open environment)
	Working mode	AP(Wireless access point) mode; AP+STA(Coexistence mode)
	Built-in server language	Chinese, English
Software part	Supported application protocols	Modbus-RTU
	Supported network	Modbus-TCP

The user manual

	protocols	
	Driver support	Wi-Fi
	Connect function	Support APP connection, monitoring, parameter setting
Other	The number of connected devices	1pcs
	Warranty	2 years
	Authentication	CE, ROHS

2 Install Wi-Fi RTU and Set Parameters

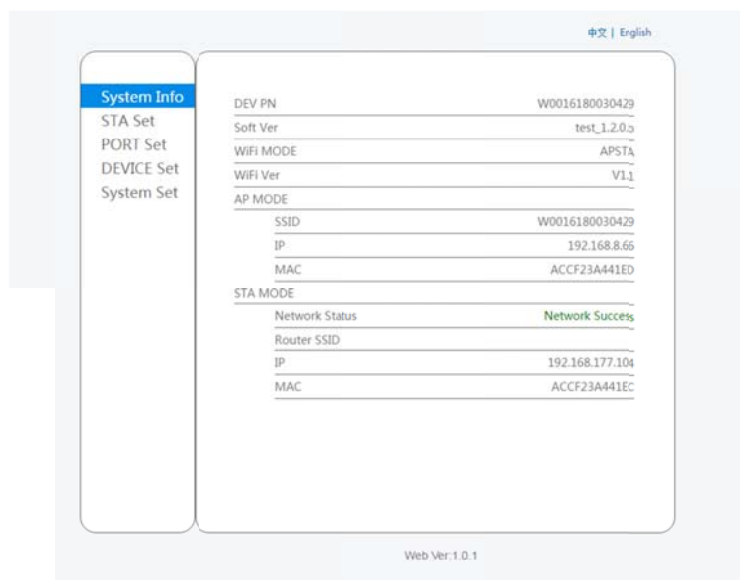
2.1 Install Wi-Fi RTU

Use RS-485 cable to connect the Wi-Fi RTU and the equipment. And use RS-485 cable or adaptor to supply power. The PWR light will be blue when it works.

2.2 Set Parameters

2.2.1 Enter the Web Server into Wi-Fi RTU Setting

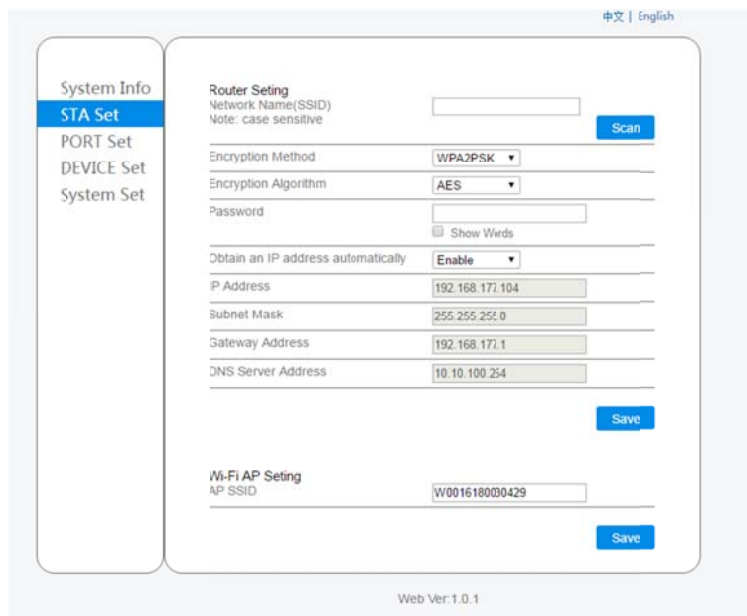
Use computer with wireless network adapter to connect the Wi-Fi AP (The Access is the PN number, Password is 12345678). Start the web browser and enter default IP address " 192.168.8.66" to get the login interface(the default user name and password is admin).



2.2.2 Set the network parameter

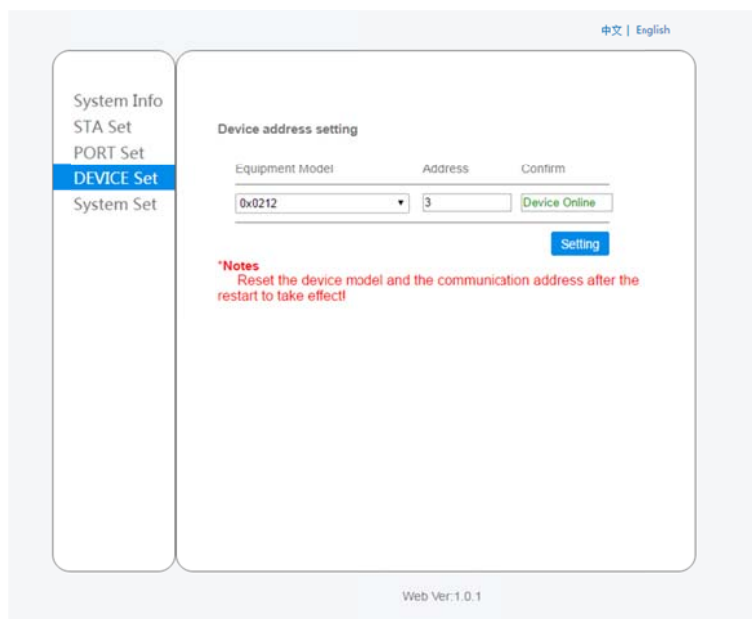
Click on " STA Set" to set the network parameter. You can use the Searching to get AP access nearby, and then put the password. You can also to change the name

of AP access of Wi-Fi RTU.



2.2.3 Set the device address parameter

Click on " Device Set" to set the device address parameter.



2.2.4 Restart the Wi-Fi RTU form System Set

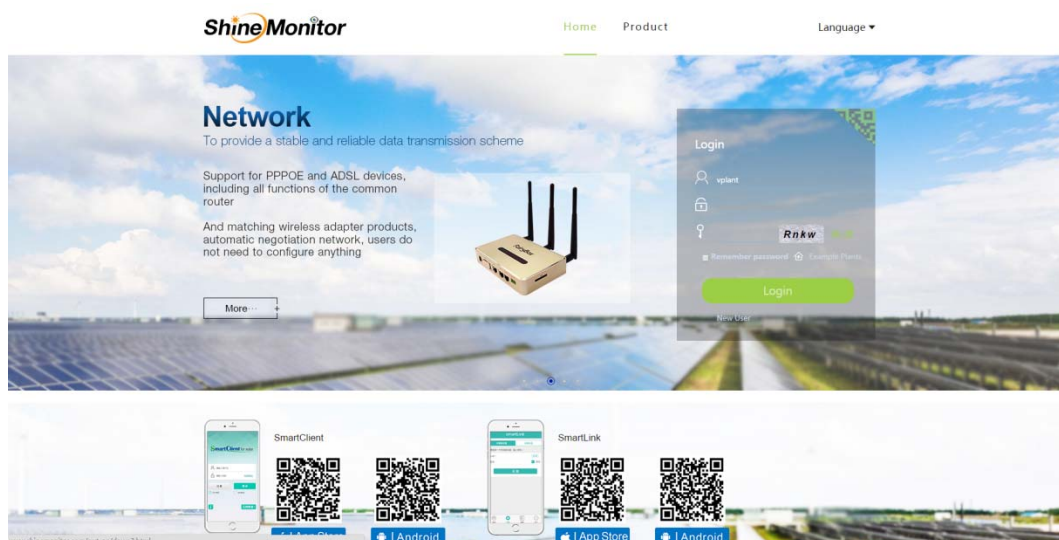
2.2.5 Check the setting

Check the device connect status or and the network connect status from "Device Set" and "Network Set" .

3 Check Data for the Monitor System

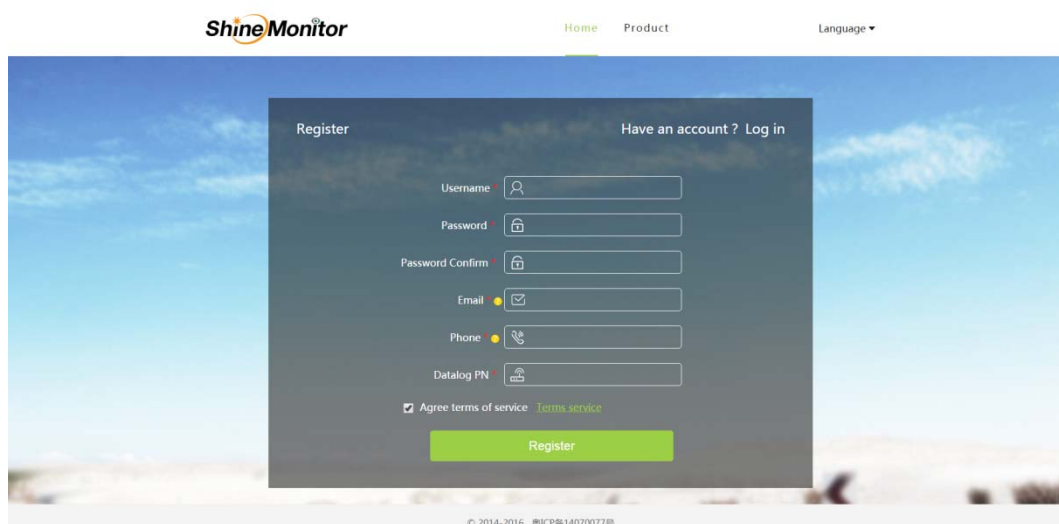
3.1 Enter Monitor System

Enter www.shinemonitor.com in the web browser to get Monitor System.



3.2 Register

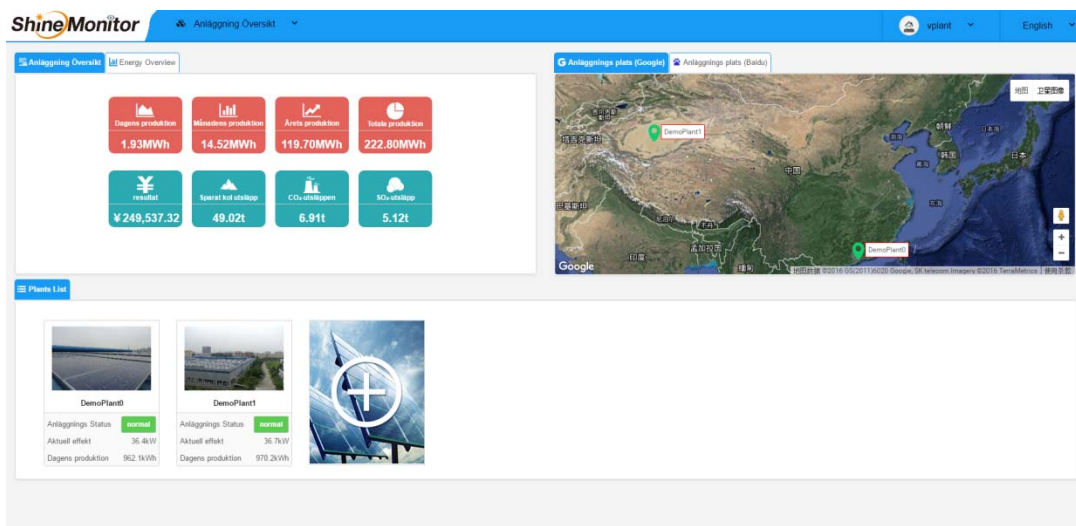
Use the PN number to register a new user.



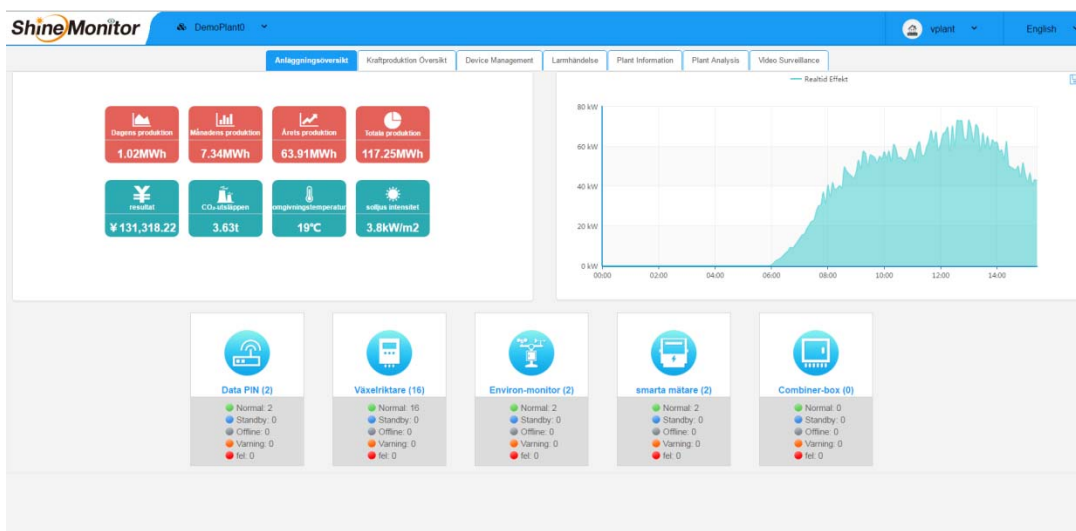
3.3 Check Data

The system has created a plant when register.

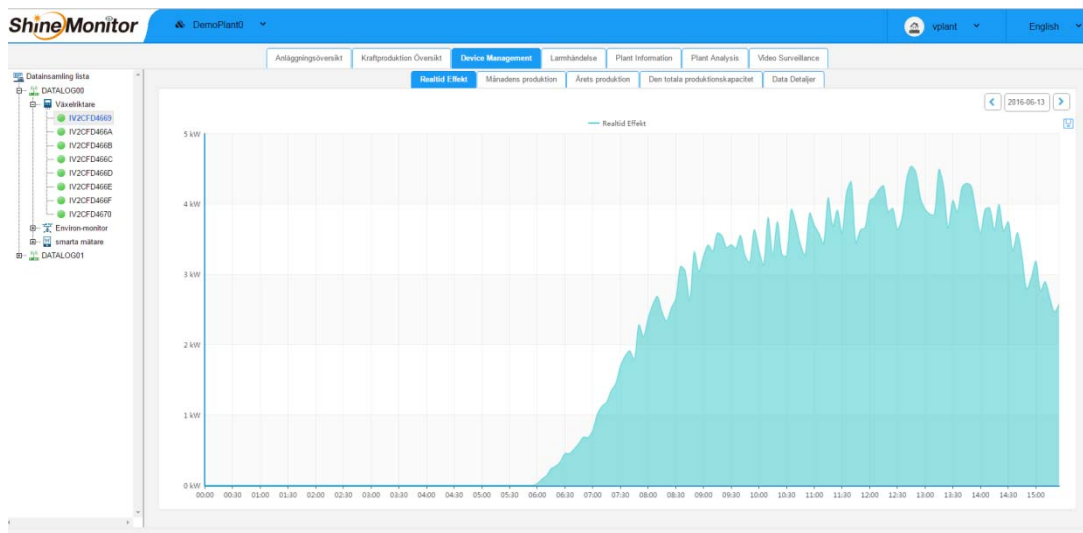
The user manual



Click on one plant to view the detail data of it, including energy output, device status, warnings etc.



Check the real-time output power and detail data from "Device Management" .



3.4 Creating new Plant

Create a new plant for the Home page of System if needed.

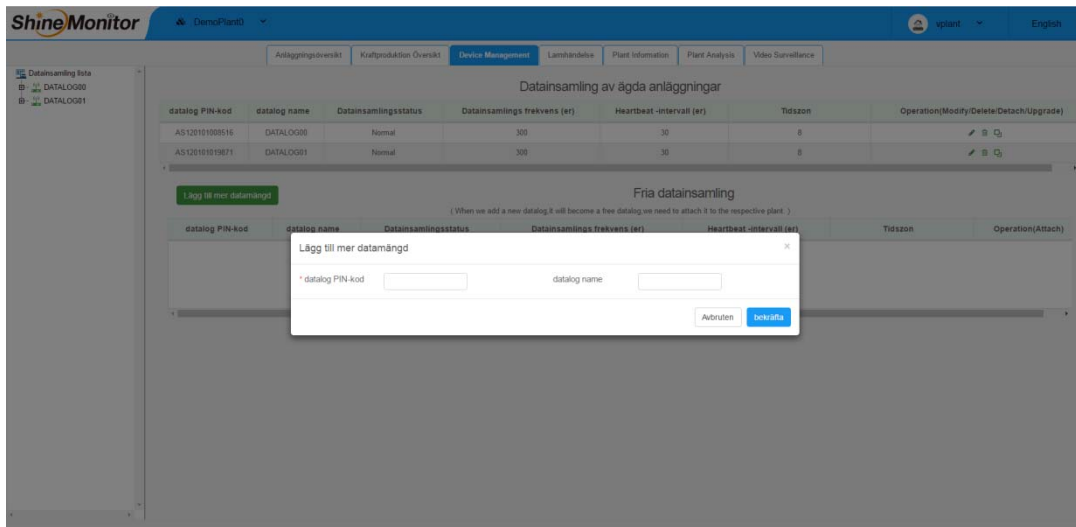
The screenshot shows the 'Plant Information' form in the ShineMonitor interface. The form is divided into four sections:

- 1. Installation information:** Anlægningsnavn: DemoPlant0, Installationsdatum: 2015-08-17, Nominel effekt: 90 kW, Design foretag: [empty].
- 2. Anlægnings læge:** Country: 中国, Province/State: [empty], City: [empty], Address: [empty], Tidssone: GMT+08:00 (Beijing,Chongqing,Hong Kong,Urumqi,Kuala Lumpur,Singapore J), Longitude: 113.928487, Latitude: 22.583399.
- 3. Inkomst formal (1 kWh):** Reinvinter: 1.12, Valutor: RMB(¥), Sparad kol (kg): 0.22, Koldioxidutslipp (kg): 0.031, Utslippet av svaveltoke (kg): 0.023.
- 4. Anlægning oversigt:** Anlægnings bilder: [empty].

3.5 Add new Data Connector

Add new Data Connector from Device setting if needed.

The user manual



4 Attention

- 4.1 The Web Server of Wi-Fi RTU needs to load the first web and then to load the second one, Please do not refresh the web frequently.
- 4.2 The web of the Monitor System can not support the version under IE9, please use IE9 or above IE9, or Chrome.